



# Utility Rates

Effective December 1, 2021

# BRAINERD PUBLIC UTILITIES SERVICE RATES

This pamphlet represents rates for electric, water, and wastewater treatment services provided by Brainerd Public Utilities (BPU). BPU’s rates are set by the Brainerd Public Utilities Commission. All rates are subject to change if deemed appropriate by BPU.


If you have any questions regarding any of the information in this pamphlet, please contact the appropriate BPU staff below:

<b>Scott Magnuson, Superintendent</b>	<b><a href="mailto:smagnuson@bpu.org">smagnuson@bpu.org</a></b>
<b>Todd Wicklund, Finance Director</b>	<b><a href="mailto:twicklund@bpu.org">twicklund@bpu.org</a></b>
<b>Trent Hawkinson, Electric Supervisor</b>	<b><a href="mailto:thawkinson@bpu.org">thawkinson@bpu.org</a></b>
<b>Charlie Gammon, Wastewater Supervisor</b>	<b><a href="mailto:cgammon@bpu.org">cgammon@bpu.org</a></b>
<b>Jana Pernula, Accounting Supervisor</b>	<b><a href="mailto:jpernula@bpu.org">jpernula@bpu.org</a></b>
<b>Aaron Andersen, IT Supervisor</b>	<b><a href="mailto:aandersen@bpu.org">aandersen@bpu.org</a></b>

## CITY OF BRAINERD RATES

This pamphlet also represents wastewater collection and stormwater rates that BPU bills on behalf of the City of Brainerd. The City of Brainerd’s rates are set by the Brainerd City Council. If you have any questions in regards to these two rates, please call the City Engineer’s Office at 218-828-2309.

**RELIABLE PUBLIC POWER PROVIDER**



RP3 PUBLIC POWER PROVIDER  
American Public Power Association

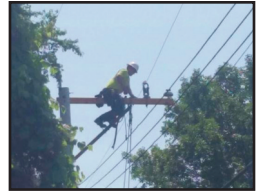
BPU is a designated gold level “reliable public power provider” by the American Public Power Association. The RP<sub>3</sub> designation certifies that BPU has demonstrated leading practices in reliability, safety, workforce development, and system improvement.

BPU takes pride in providing electricity to Brainerd and the surrounding areas because our customers are not only our owners, but also our neighbors. As a community-owned, not-for-profit utility, our focus is directly on the customer. The prestigious RP<sub>3</sub> designation indicates that our service meets high industry standards.

The RP<sub>3</sub> designation is good for three years, but BPU continues to look for ways we can improve service to the community. BPU is always open to suggestions from their customers to help us to continue to achieve this commitment.

## **Electric Department**

BPU's Electric Department provides safe and reliable electricity to customers in Brainerd, portions of Baxter and surrounding townships. BPU takes public power seriously and strives to provide affordable electric rates to its customers. Our professional and dedicated field crews are on call 24/7, 365 days a year, to ensure your lights stay on. BPU will continue to make investments in the future to ensure safe and reliable electricity for all of its customers.

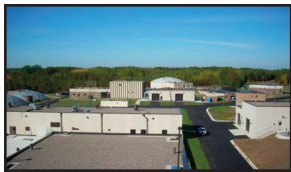
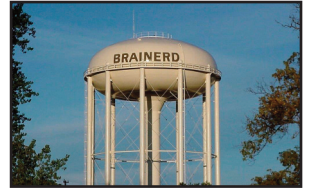


## **Hydro Dam**

The hydro dam provides a reliable renewable energy source from the Mississippi River, and is able to generate 3.2 megawatts of electrical power. Generation from the hydro dam represents approximately 10.5% of energy used by BPU customers.

## **Water Department**

Brainerd's water filtration plant treats approximately 1.55 million gallons per day. The plant removes iron and manganese from the water, which is pumped out of six wells that were drilled near the facility. BPU is able to achieve 95% removal of those minerals which helps to improve the taste and appearance of the water. After filtration, the water is pumped to two water towers and the distribution system and ultimately to customer taps.



## **Wastewater Department**

The Brainerd Wastewater Treatment Facility (WWTF) is a Class A facility designed to treat an average wet weather flow of 6.0 MGD with a CBOD5 Influent concentration of 240 mg/L and a TSS concentration of 240 mg/L.

The facility receives wastewater from the communities of Brainerd and Baxter. The Brainerd interceptor system consists of 2,745 feet of 20-inch force main, 587 feet of dual 20-inch river crossing main and 1,510 feet of 30-inch interceptor sewer. The WWTF treats approximately 2.2 million gallons of wastewater daily from the two cities.

**ELECTRIC RATES – COMMERCIAL**

Each customer will pay a power cost adjustment (PCA) each month based on the kWh that is used. The PCA is based on BPU's cost of power purchased wholesale from American Energy Partners, Inc.

The monthly service charge applies for all rate classifications, regardless of usage on meter. To qualify as a small, medium, or large general service customer, the rate is based on the three highest monthly demands (kW) in a 12 month period. The customer will remain at this rate for the next 12 months. The customer's demand (kW) will be reviewed on a yearly basis.

**Commercial Service – Single Phase - < 15kW**

Service Charge	\$24.25	Monthly
Energy Charge	\$0.1030	All kWh

**Commercial Service – Three Phase - < 15kW**

Service Charge	\$29.25	Monthly
Energy Charge	\$0.1030	All kWh

The Commercial Service Rate applies to commercial customers, for a single or three phase electric service supplied through one meter at the secondary voltage available at the customer's location. Customers whose demand (kW) is less than 15 kW will be charged this rate.

**Small General Service – Single Phase – 15kW to <100kW**

Service Charge	\$45.00	Monthly
Energy Charge	\$0.0891	0 - 2,500 kWh
	\$0.0791	Excess kWh
Demand Charge	\$3.00	0 - 8 kW
	\$8.00	Excess kW

**Small General Service – Three Phase – 15kW to <100kW**

Service Charge	\$55.00	Monthly
Energy Charge	\$0.0891	0 - 2,500 kWh
	\$0.0791	Excess kWh
Demand Charge	\$3.00	0 - 8 kW
	\$8.00	Excess kW

The Small General Service Rate applies to commercial customers whose demand (kW) is 15 to <100 for a single or three-phase electric service supplied through one meter at the secondary voltage available at the customer's location.

**Medium General Service – Three Phase – 100kW to <1,000kW**

Service Charge	\$75.00	Monthly
Energy Charge	\$0.0550	All kWh
Demand Charge	\$15.50	All kW

The Medium General Service Rate applies to commercial customers whose demand (kW) is 100 to <1,000 for a three-phase electric service supplied through one meter at the secondary voltage available at the customer's location. If the service is primary metered a 3% discount will be applied to the energy and demand rates.

**Large General Service - 1,000kW – to <2,500kW**

Service Charge	\$120.00	Monthly
Energy Charge	\$0.0546	All kWh
Demand Charge	\$13.75	All kW

**Large Power - >2,500kW**

Service Charge	\$120.00	Monthly
Energy Charge	\$0.0852	All kWh
Demand Charge	\$12.75	All kW

Type of Service

Service will be alternating current; 60 hertz; under one of the following classifications

- Secondary Voltage – Single or three phase, 600 volts or less
- Primary Voltage – Three phase, 4,160 volts to 34,500 volts, supplied from BPU

Service voltage available in any given case is dependent upon voltage and capacity of existing lines in vicinity of customer's premises. Service is in accordance with BPU Electric Service Regulations and any applicable riders.

Billing Demand

Billing Demand is the kW measured during the 15-minute period of customer's greatest use during the month, as adjusted for the power factor. When customer's average monthly power factor is less than 85 percent lagging, the maximum measured demand will be adjusted by multiplying 85 percent and dividing by the average monthly power factor in percent. The average monthly power factor will be computed by the formula, average monthly power factor equal  $(100 \cdot \text{kWh}) / \text{Sqrt}(\text{kWh}^2 + \text{kVarh}^2)$ .

If the service is primary metered a 3% discount will be applied to the energy and demand rates.

Economic Development

The Economic Development Rate (EDR) is offered for new load generated by Small, Medium, and Large General Service electric customers. The following table shows the discount rate over a five (5) year period.

Year	SGS	MGS LGS LP
1	21%	13%
2	17%	11%
3	13%	9%
4	9%	7%
5	5%	5%

All the components of the electric charges will be calculated using the current electric service rates to get the gross electric charges. The EDR discount rate is then applied to the gross electric charges and will show as a credit on the customer's utility bill. Each year on the anniversary of the customer's service start date the EDR discount rate will decrease and at the end of five (5) years, the EDR discount rate will cease.

# Dual Fuel

Monthly Service Charge	\$6.50	Monthly
Energy Charge	\$0.0593	All kWh

A dual fuel system uses two independent heating systems to heat your business. BPU dual fuel customers use electricity as the primary source of heat. Propane, fuel oil, or natural gas can be used as the back-up heat source. The back-up heat source must be automatic and of adequate size to heat your business during peak interruptions. For example, an electric heat source, such as a plenum heater, with fuel oil, propane, natural gas or electric storage heat as the back-up heating system would qualify.

This program is available to customers who already have an electric service. This rate is interruptible up to 400 hours per season and will be remotely controlled by BPU to prevent excessive peak usage. The space heating load will be separately metered and may be interruptible at any time. This type of service is single phase or three phase, 60 hertz, at available secondary voltage.

# Off-Peak

Monthly Service Charge	\$6.50	Monthly
Energy Charge	\$0.0600	All kWh

This program is available to customers who already have an electric service. This rate is for interruptible service to energy loads, which are remotely controlled by BPU. This space heating load will be separately metered. Service under this schedule will be available for approximately eight (8) hours per day, normally 11:00 p.m. to 7:00 a.m. or as established by BPU. This type of service is single phase or three phase, 60 hertz, at available secondary voltage.

# Off-Peak Heating

An off-peak heating customer uses electricity as their primary source of heat. An off-peak heating system utilizes a thermal (heat) storage system that heats up during off-peak times, typically 11:00 p.m. to 7:00 a.m. In-floor electric mats, electric boilers for in floor hot water heat, and brick storage units are all examples of storage heat system. The heat is then released into your business the following day to provide 100% of your heating as needed.

# Off-Peak Electric Hot Water Storage

An off-peak water heating customer is required to have a 120 gallon or larger, UL approved, water heater installed. The water heater storage system heats water during off-peak times, typically 11:00 p.m. to 7:00 a.m. The heated water can then be used anytime during the day.

# Security Lights

BPU offers a security lighting program. The security lighting is available to both residential and commercial customers. BPU maintains the security light. This service is offered for a monthly fee of \$12.00 (+tax) per security light. For further information please contact the BPU Repair Office at 829-2193.

# Distributed Generation

Please go to BPU's website, [www.bpu.org/services/renewable](http://www.bpu.org/services/renewable), for further information on distributed generation.

## **Demand Charges**

Depending on how a customer uses electricity, electric utility customers are charged for different electric services. Along with a basic monthly customer charge, most customers pay for the energy they use (measured in kilowatt-hours-kWh). Larger users of electricity are also charged for demand (measured in kilowatts, abbreviated kW).

The reason there are both consumption and demand charges is because utility companies must invest in generation and distribution equipment to meet the maximum demand that all customers may require at one time. Utilities use peak demand to properly size electric service for their customers and to ensure that there is sufficient capacity available. Separate charges for energy consumption and demand more fairly distribute the costs of providing service to customers who use large amounts of energy. Your energy charges are based only on the total amount of energy you consume. The demand charge is based on the highest 15-minute interval of electric usage during the billing period.

### **Principal Behind Demand Charges**

Demand is measured to determine the amount of the utility's equipment that is dedicated to serving a specific customer's peak needs. Imagine a trucking company who has contracted to deliver 30 loads of dirt to a construction site. If he can deliver one load a day, he can meet the contract with one truck. If he must deliver all 30 loads within the same 15 minutes, he will need 30 trucks. The trucker will have to set his charges depending on the demand on his resources. It would be difficult for the trucker to justify making his customer who buys one load of dirt a month pay the cost of the 30 trucks he bought to meet the contract with the high peak demand for deliveries. It would be fairer for the customer with the high peak requirement to bear the burden for his demand needs.

### **Managing Your Demand Charges**

Demand customers may be able to reduce the size of their bill by reducing peak demand. The key to reducing peak demand is optimal scheduling or shifting the times of electrical equipment usage within the facility. The goal is to reduce the load at any single given time. Here are a few tips to reduce demand.

- What energy-efficient improvements can be made?
- When you start up your operations in the morning, do not flip all switches on at one time, consider a staged start-up; turn on one piece of equipment at a time, create a schedule where the heaviest intensity equipment doesn't all operate at full tilt simultaneously, and think about what equipment can be run at a lower intensity without adverse effect.
- If the equipment requires heaters, start one machine at a time allowing the first machine to come up to the temperature before starting the second.
- Often there is equipment that is operated infrequently. If this is the case, can some other equipment be turned off while this equipment is running?

Often, timers can be utilized to give you the control needed to achieve these demand reductions. However, if your electrical use is high and you have a large number of electrical loads, it may be feasible to install a computerized load-control system to coordinate and optimize the operation of your equipment.

# ELECTRIC RATES – RESIDENTIAL

Each customer will pay a power cost adjustment (PCA) each month based on the kWh that are used. The PCA is based on BPU’s cost of power purchased wholesale from American Energy Partners, Inc.

The monthly service charge applies to all rate classifications, regardless of usage on meter.

## Residential Service

Monthly Service Charge	\$16.25	Monthly
Energy Charge	\$0.0858	All kWh

The Residential Electric Rate is available to single phase residential customers that are served through one meter at a voltage of 120/240 volts. Each apartment or dwelling unit shall be considered a single private residence.

## Dual Fuel

Monthly Service Charge	\$6.50	Monthly
Energy Charge	\$0.0593	All kWh

A dual fuel system uses two independent heating systems to heat your home. BPU dual fuel customers use electricity as the primary source of heat. Propane, fuel oil, or natural gas can be used as the back-up heat source. The back-up heat source must be automatic and of adequate size to heat your home during peak interruptions. For example, an electric heat source, such as a plenum heater, with fuel oil, propane, natural gas or electric storage heat as the back-up heating system would qualify.

This program is available to customers who already have an electric service. This rate is interruptible up to 400 hours per season and will be remotely controlled by BPU to prevent excessive peak usage. The space heating load will be separately metered and may be interruptible at any time. This type of service is single phase or three phase, 60 hertz, at available secondary voltage.

## Off-Peak

Monthly Service Charge	\$6.50	Monthly
Energy Charge	\$0.0600	All kWh

This program is available to customers who already have an electric service. This rate is for interruptible service to energy loads, which are remotely controlled by BPU. This space heating load will be separately metered. Service under this schedule will be available for approximately eight (8) hours per day, normally 11:00 p.m. to 7:00 a.m. or as established by BPU. This type of service is single phase or three phase, 60 hertz, at available secondary voltage.

## Off-Peak Heating

An off-peak heating customer uses electricity as their primary source of heat. An off peak heating system utilizes a thermal (heat) storage system that heats up during off-peak times, typically 11:00 p.m. to 7:00 a.m. In-floor electric mats, electric boilers for in floor hot water heat, and brick storage units are all examples of storage heat system. The heat is then released into your house the following day to provide 100% of your heating as needed.

## Off-Peak Electric Hot Water Storage

An off-peak water heating customer is required to have a 120 gallon or larger, UL approved, water heater installed. The water heater storage system heats water during off-peak times, typically 11:00 p.m. to 7:00 a.m. The heated water can then be used anytime during the day.



# MANAGE YOUR UTILITIES

## SURPRISE BILLS? ELIMINATE THEM!

Monitor consumption, set usage thresholds, and access your account information 24/7/365.

- Specify billing and usage thresholds.
- View estimated bill amounts.
- Monitor consumption with easy-to-understand graphs.

**No fee to sign up! Visit [bpu.org](http://bpu.org) to register.**



Tyler Smart Meter Portal provides important electric and water usage information to allow customers to manage and reduce utility costs in their homes and businesses. Access smart meter data to view annual, monthly, daily, or hourly usage in easy-to-understand graphs.

### What can I do with the usage information?

You can use the information to better understand how and when you use utilities.

### Does the portal have other features in addition to showing my consumption/usage?

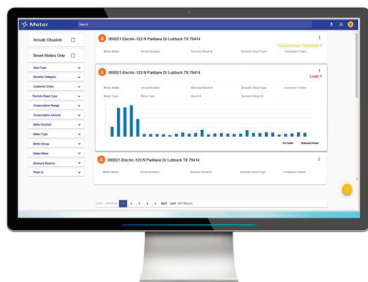
Yes! You can set up thresholds for both electric and water usage and be notified if you go over the set thresholds.

### How will I receive alerts?

You will receive your alerts by email or text message using the email address or cell phone number that you designate when creating your account. In addition, you can log into the portal to see alerts online.

### Can the portal indicate if I am using electric or water excessively?

Yes! Conservation is the key to avoiding high bills and high consumption. This system will allow you to monitor your usage and be made aware quicker of any abnormalities and be able to control utility expenses based on your specific settings.



**Brainerd Public Utilities • 8027 Highland Scenic Rd • Baxter MN • (218) 829-8726**

## COMMERCIAL ENERGY REBATES

BPU has partnered with Frontier Energy to administer services related to commercial and industrial energy conservation. Frontier Energy personnel work one-on-one with BPU customers. They visit business sites, review project plans, assess technologies, calculate potential energy savings, and help participating businesses get maximum rebates to lower their upfront costs of energy-saving facility projects and continue to enjoy the energy savings for years to come. Following is a list of areas they can help you with.

- Commercial Refrigeration and Food Service
- Heating and Cooling
- Lighting – New Construction
- Lighting – Retrofit
- New Construction Design Review
- Pumps and VFD's
- Specialty Measures

Please contact Mike Swanson, Energy Analyst, at **952-767-7469** or **[mswanson@frontierenergy.com](mailto:mswanson@frontierenergy.com)** to set up an appointment to discuss your rebate options.



## RESIDENTIAL ENERGY REBATES

Making your home more energy efficient can reduce energy bills, improve comfort, and protect the environment. BPU provides rebates to help you make those energy-efficient improvements.

Please visit BPU's website, **[www.bpu.org/services/rebates](http://www.bpu.org/services/rebates)**, to find what rebates are available to you.

# WATER RATES

Commercial water customers will be subject to Minnesota sales tax.

<u>METER SIZE</u>	<u>MONTHLY RATE</u>	<u>INCLUDING MDH CHARGE</u>
3/4 inch	\$ 19.30	\$ 20.11
1 inch	44.50	45.31
1 1/2 inch	65.50	66.31
2 inch	110.00	110.81
3 inch	203.50	204.31
4 inch	298.50	299.31
6 inch	473.50	474.31
8 inch	883.50	884.31

Each water customer will be charged a monthly service charge, according to the size of their water meter. The monthly service charge is billed even if there is no water consumption.

**In addition to the monthly water service charge, each customer is billed a commodity charge of \$3.95 per 1,000 gallons of water used.**

If a customer lives outside the city limits, the customer is charged 200% for both the service and commodity charge.

## Safe Drinking Water Fee

A \$0.81 water service connection fee is included in each monthly service charge. The drinking water service connection fee was established in 1993 by the MN Department of Health to help fund program activities related to compliance with the federal Safe Drinking Water Act.

WASTEWATER TREATMENT RATES

METER SIZE	MONTHLY CHARGE
3/4 inch	\$ 14.95
1 inch	17.50
1 1/2 inch	19.50
2 inch	21.50
3 inch	28.50
4 inch	32.50
6 inch	37.50

Each wastewater customer will be charged a monthly service charge based on the size of the customer’s water meter. The monthly service charge is billed even if there is no water consumption.

**In addition to the monthly service charge, each customer is billed a commodity charge of \$3.35 per 1,000 gallons of water used.**

If a customer lives outside the city limits, the customer is charged 200% for both the service and commodity charge.

WASTEWATER DEBT SERVICE RATES

METER SIZE	DEBT SERVICE
3/4 inch	\$ 5.00
1 inch	6.50
1 1/2 inch	9.00
2 inch	11.00
3 inch	15.50
4 inch	19.50
6 inch	27.50

Each wastewater customer is charged a monthly debt service charge based on the size of their water meter. This charge is to fund a portion of the upgrade and expansion of the wastewater treatment facility.

If a customer lives outside the city limits, the customer is charged 200% of the above wastewater rate.

# WASTEWATER COLLECTION RATES

This charge is billed on behalf of the City of Brainerd to cover the maintenance costs of the City’s wastewater collection system. Each wastewater customer will be charged a monthly service charge based on the size of the customer’s water meter. The monthly service charge is billed even if there is no water consumption.

<u>METER SIZE</u>	<u>MONTHLY CHARGE</u>
3/4 inch	\$ 6.05
1 inch	13.00
1 1/2 inch	18.60
2 inch	35.00
3 inch	55.00
4 inch	105.00
6 inch	140.00

**In addition to the monthly service charge, each customer is billed a commodity charge of \$1.40 per 1,000 gallons of water used.**

If a customer lives outside the city limits, the customer is charged 200% for both the service and commodity charge.

## SUMMER SPRINKLING RATES

### Residential Customers

All residential customers are given a sprinkling credit on their wastewater treatment and collection rate for the billing months of June through September. The customer’s wastewater charges will be based on the customer’s average water consumption during the billing months of December, January, and February.

No residential customer will be allowed to install a separate water meter for a sprinkling system.

### Commercial Customers

Commercial customers must purchase a separate water meter for irrigation purposes. The customer is then charged for the water usage on this meter for the months of May through September. No wastewater charges are billed for this meter.

### Backflow Preventers

Both residential and commercial underground sprinkling systems shall have a backflow preventer installed in the main service connection to the sprinkling system that is in accordance with the MN Plumbing Code requirement.

## STORMWATER

**This charge is billed on behalf of the City of Brainerd.** The revenue collected for this charge is used to maintain and improve the existing stormwater drainage system for impervious surfaces (where stormwater cannot penetrate into the ground). **Residential customers are charged a \$4.00 monthly fee and commercial customers are charged according to the amount of impervious surface their property has.**



**AERIAL PHOTO OF  
BPU Service Center and Wastewater Treatment Plant**





Mailing Address

PO Box 373  
Brainerd, MN 56401

Business Office

8027 Highland Scenic Rd  
Baxter, MN 56425  
(218) 829-8726

Repair Office and 24 Hour Emergency  
(218) 829-2193

[www.bpu.org](http://www.bpu.org)

Visit us on  **facebook.**