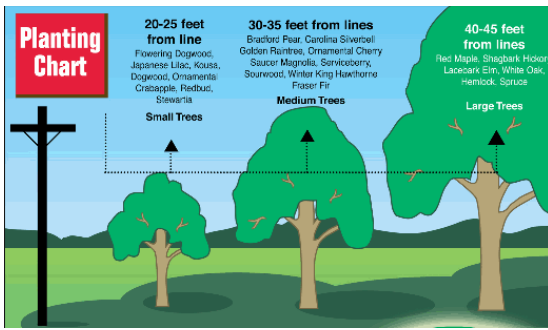


## Tree Trimming & Shrubs by Transformers

Tree trimming requests will be put on a list to be done during the winter months. Trees that interfere with Brainerd Public Utilities' (BPU) power lines, with the exception of service wires to residences or buildings, will be trimmed or removed depending on the circumstances.

Trimming or removal of trees on private property is the property owner's responsibility. BPU will temporarily remove and replace the property owner's service wires to accommodate the tree trimming or removal during normal business hours.



BPU requires 24 hours notification to temporarily remove the service wires.

If you would like to be put on the winter tree trimming list, Please call the repair office, at (218) 829-2193.

In addition, please keep shrubs and structures 12 feet from all sides of transformers, junction Boxes, and/or any BPU Utility box. We need room to work safely on these devices.

Obstructions may be damaged or removed during service restoration or maintenance and will not be replaced.

## BRAINERD PUBLIC UTILITIES BUDGET BILLING POLICY

Policy 2016-18

This policy is in effect for Brainerd Public Utilities (BPU) residential customers to sign up for budget billing to even out their utility costs by paying a consistent amount each month. Budget billing will help manage unanticipated high billings during summer and winter months.

**A customer can enroll in the budget billing program in March and September of each year. An application will have to be filled out and returned to BPU by last day of chosen month. The application can be downloaded from BPU's website [www.bpu.org](http://www.bpu.org) or picked up at BPU's business office at 8027 Highland Scenic Road.**

A budget billing amount will be determined by using the previous 12 months of billing history for the customer's residence and dividing the total amount by 12.

Budget billing accounts will be calculated twice a year; at the end of March, effective with the April billing and at the end of September, effective with the October billing. BPU has the right to increase or decrease the calculated amount at any time, if BPU believes it is necessary. The customer will be notified by BPU if a change is necessary.

### To be eligible for budget billing the customer must:

- \*Have a 12 month billing history at current place of residence.
- \*Be current in utility payments and have a good paying history. (No more than one (1) penalty in a 12 month period.) Account has to be paid in full when enrolling in the program.
- \*Agree to remain in the program for 12 months. After the 12 month period, a customer can be removed from budget billing by notifying BPU in writing or sending an e-mail that they no longer wish to be enrolled in the budget billing program. Customer would have to wait another 12 months before being re-enrolled.
- \*Agree to pay the full budget amount each month by the due date of customer's utility bill.
- \*Agree that budget billing accounts are ineligible for time extensions or a payment arrangement to pay budget amount.
- \*Agree that after two (2) delinquent payments, or if account is in disconnect status the account will automatically be removed from budget billing and customer will have to wait 12 months, with a good paying history, before being allowed to enroll in the program again.

**Business & Repair  
Office Hours**  
7:00 a.m.—3:30 p.m.

**Emergency 24 hour service  
365 days a year:**  
218-829-2193

**Business Number:**  
829-8726

**Repair Number:**  
829-2193

**Facebook:**  
Brainerd Public Utilities



**Gopher State One**  
at 1-800-252-1166 for  
water & electric  
locations 48 hours  
before digging.

EMAIL@BPU.ORG  
[WWW.BPU.ORG](http://WWW.BPU.ORG)



## How Much Does It Cost to Operate Your

\* Based on \$0.0774 per kilowatt - hour

Appliances	Average kWhs Monthly	Approximate Cost *
Freezer (Frost Free)	150	\$11.61
Freezer (Standard)	100	\$ 7.74
Microwave Oven (approx. 1200 watts per hour / 30 min per day)	19	\$1.47
Clothes Dryer	125	\$9.68
DVR (approx. 51 watts per hour / 24 hours a day)	40	\$3.10
Automatic Washer	15	\$1.16
Water Heater (Family of 4)	500	\$38.70
LCD/LED 22" TV (approx. 30 watts per hour / approx. 5 hours per day)	5	\$0.39
Blender	1	\$0.08
Coffee Maker	10	\$0.77
Dishwasher	100	\$7.74
Toaster	3	\$0.23
Garbage Disposal	2	\$0.15
Game Console (approx. 90 watts per hour / 3 hours per day)	10	\$0.77
Electric Blanket	15	\$1.61
Cell Phone (charging 3 hours per day x 2 phones)	2	\$0.15
Hair Dryer (1500 watts per hour / approx. 10 minutes a day)	10	\$0.77
Humidifier	30	\$2.32
Dehumidifier	200	\$15.48
Electric Range	150	\$11.61
Refrigerator (Frost Free)	200	\$15.48
Space Heater (approx. 1500 watts per hour/ 8 hours per day)	370	\$28.64

### Energy Use Calculator

Energy Use Calculator provides free energy usage calculators to find the electricity consumption of your devices.

Go to <http://energyusecalculator.com/index.htm> to find out how much energy your devices are using and how much they are costing you.

Cooling and heating costs make up approximately 50% of the average utility bill in US homes.

### KEEP FATS, OILS & GREASE OUT OF OUR SEWERS

Fats, oils, and grease resulting from food preparation can build up in the sewer pipes and cause costly blockage and backups and sewage overflows to private and public property.

Tips to keep drains fat-free: Pour fats, oils, and grease into a container and store in the freezer, then put in the trash after it has hardened. Use paper towels to wipe greasy dishes before washing. Use sink strainers to catch food waste when washing.

