

Watt's News

December 2007
Volume 20, No 12

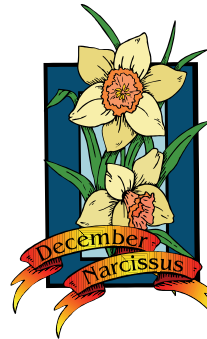
Official Newsletter of Brainerd Public Utilities, PO Box 373, Brainerd, MN 56401

Billing Cycles & Due Dates

We bill four times a month. Your due date is determined by the first two numbers of your account number. We can not change due dates. Please refer to the chart below for more detail.

Billing Cycle	Due Date each Month
01, 02, 03, 04, 05	3rd of every month
06, 07, 08, 09, 10	10th of every month
11, 12, 13, 14, 15	17th of every month
16, 17, 18	24th of every month
20, 50	13th of every month

Please refer to the attached calendar to see what day of the month your meter will be read.



Watt's Weather

Total Precipitation

November 2007 .15"
November 2006 1.14"

Average Temperatures

November 2007 Hi 39 Lo 22
November 2006 Hi 41 Lo 21

Business & Repair Office Hours

7:00 a.m.—3:30 p.m.
Business 218-829-8726
Repair 218-829-2193

Emergency 24 hour service 365 days a year

218-829-2193

WWW.BPU.ORG

BEFORE DIGGING:

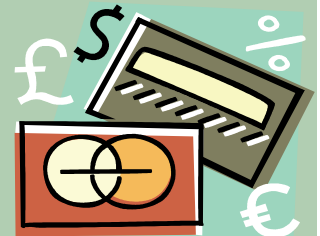
Call Gopher State One Call at **1-800-252-1166** for water and electric locations. All requests for locations must be made by calling the above toll free number at least **48 hours** before digging begins.

NOTICE: All electrical work performed in the City of Brainerd requires a "Request for Electrical Inspection" form to be completed, filed, and work inspected by our inspector. If you need the form or have any questions, please contact BPU at **825-3210** or **829-2193**.

*** Make your Life Easier with Our Payment Options ***

- Credit card payment with your Visa or MasterCard
- On-line payments (www.bpu.org)
- Direct payment plan (Application available on our BPU web-site)
- Drop your payment in one of our drop boxes located at the following locations:

The corner of 7th and Laurel Street
Outside the Senior Citizen's Center at 803 Kingwood Street
Outside the East Brainerd Mall at the Dollar Store entrance
Outside our business office at 8027 Highland Scenic Road



Merry
Christmas

and

HAPPY NEW YEAR

From all of us at Brainerd Public Utilities

Brainerd Public Utilities will be closed December 25 and January 1, due to the Holidays.

WIND GENERATION PROGRAM

As a Brainerd Public Utilities customer you can buy some of the most environmentally friendly power on the planet--renewable Wind Power.

When you choose to buy Wind Power you are choosing cleaner air and a better environment. Wind-generated power uses no fossil fuels, produces no emissions and leaves no by-product. A kilowatt-hour of electricity generated by wind is a kilowatt-hour not generated with fossil fuel and that means air quality is improved.

In Minnesota we have a huge supply of wind. This great resource combined with a sharp drop in cost of wind power generation over the past several years means that wind power makes a lot of sense for the people in Minnesota.

Here's How You Can Buy Wind Power

Clean, renewable Wind Power is available in "blocks" of 100 kilowatt-hours (kWh) per month. When you sign up you'll tell Brainerd Public Utilities how many blocks you want and agree to pay for that many blocks each month for a one year commitment. Cost to produce wind power has dropped almost 90% over the past 20 years but it still costs a bit more than coal or gas generated electricity. To sign up, fill out the form at the bottom of this page and send it in with your payment. Please indicate the number of 100 kilowatt-hours (kWh) wind blocks you want to purchase each month. Remember, each block is a \$2.50 investment and an additional charge to your account.

The charge for your wind power will show up as a separate item on your monthly billing It's easy!

<u>Wind energy in blocks</u>	<u>Added cost per month</u>
1 block of 100 kWh	\$ 2.50
2 blocks of 100 kWh	\$ 5.00
3 blocks of 100 kWh	\$ 7.50
4 blocks of 100 kWh	\$10.00
5 blocks of 100 kWh	\$12.50
6 blocks of 100 kWh	\$15.00
7 blocks of 100 kWh	\$17.50



(Please note you cannot subscribe for more than your average KWH usage.)



WINDS GENERATION PROGRAM APPLICATION

Starting Date: _____

Number of block(s) (each block=100 kWh's/mo) Account #:

Name: Phone #:

Address: Signature:

I understand that my commitment is for one year and will then continue on a month-to-month basis until I notify Brainerd Public Utilities in writing to end my participation in the Wind Generation program.

EXPLANATION OF INFORMATION AND CHARGES ON YOUR BILL

Address and Telephone Number – Telephone number to call for billing inquiries and BPU’s mailing address and street address.

Account Number – Often requested when you correspond with us. Your account number changes if you move from one address to another.

Due Date – Please pay your bill by this date.

Amount Due – Total amount of charges owing, including both current and past due charges.

Number of Days – Total number of days in the current month’s billing cycle.

Bill Date – The date your utility bill is actually billed in our business office.

Electric – The charge for the kilowatt hours that you use each month.

Water – The charge for the gallons of water you use each month. The service charge also includes a \$0.53 Minnesota Department of Health charge to accommodate the mandatory State charge that has been placed on each water meter in the State since July 1, 1992.

CIP – A State mandated 1.5% charge on all electric charges billed to you. The purpose of the Conservation Incentive Program (CIP) is to assist utility customers in becoming more energy efficient and to promote energy conservation.

Stormwater – This charge is billed on behalf of the City of Brainerd. The revenue collected for this charge is used to maintain and improve the existing storm water drainage system for impervious surfaces (where storm water cannot penetrate into the ground). Residential customers are charged a \$3.00 monthly fee and commercial customers are charged according to the amount of impervious surface their property has. If you have any questions about this charge, please call the City Engineer’s Office at 828-2309.

Wastewater Treatment – The charge is based on your water consumption. It covers the cost of processing your wastewater.

Wastewater Collection – This charge also has been added to your bill on behalf of the City of Brainerd to cover the cost of maintaining the City’s wastewater collection system. You are charged \$1.00 per 1,000 gallons of water you use. If you have any questions about this charge, please call the City Engineer’s Office at 828-2309.

Wastewater Debt Service – This charge is determined by the size of your water meter. The revenue is used to help pay for the expansion and upgrade of the Wastewater Treatment Facility.

Penalty – There is a 10% penalty applied to your current charges if they are not paid by the due date.

kWh – abbreviation for kilowatt-hour, the unit in which electricity is measured. One kWh is 1,000 watts used for one hour. The number kWh used depends on the wattage (size) of the electrical appliance and the amount of time it is in use.

Demand Meter – Commercial customers that use over 2,500 kWh each month are billed for both kWh and kW (demand). The demand charge is determined during the highest 15 minute period of electric usage during the month. Electrical load scheduling is the key to reducing your peak demand. If you have electric motors, air conditioners or other electrical equipment which are used simultaneously, try to schedule their use at different times of the day or night to minimize peak loads.

Power Cost Adjustment – The power cost adjustment recovers the cost of energy used in Minnesota Power’s (Brainerd Public Utilities power provider) generating units and the cost of additional purchased energy required to serve your electric needs.

Security Light – A Brainerd Public Utilities customer can have a security light installed for a charge of \$12 per month, per light, plus applicable state and local sales tax. Brainerd Public Utilities will install the pole and maintain the security light.

Sprinkling Credit – All residential customers will get a sprinkling credit applied to their sewer charges for the billing months of June, July, August and September. The rate goes into effect after the water meter is read in May. The credit is based on your water usage in December, January and February.

Deposit Applied – If a customer is required to pay a deposit, according to Brainerd Public Utilities Deposit Policy, the deposit is applied to the customer’s account after 12 months of paying their bill on time; or if a final reading is done, the deposit is applied to the final bill. If the final bill is less than deposit, the remaining balance, if over \$5, will be mailed to the customer.