

Electricity—Water—Wastewater—Electricity—Water—Wastewater—Electricity—Water—Wastewater—Electricity—Water—Wastewater—Electricity—

**Business & Repair Office Hours**  
7:00 a.m.—3:30 p.m.

**Business Number:**  
829-8726

**Repair Number:**  
829-2193

**Emergency 24 hour service 365 days a year:**  
218-829-2193

EMAIL@BPU.ORG

[WWW.BPU.ORG](http://WWW.BPU.ORG)

**Facebook:**



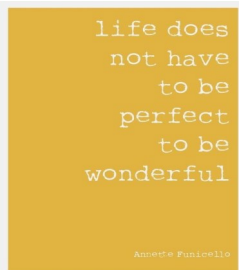
Brainerd Public Utilities

**Call Gopher State One**  
at 1-800-252-1166 for water & electric locations before digging.

All requests for locations must be made by calling the above toll free number at least 48 hours before digging begins.

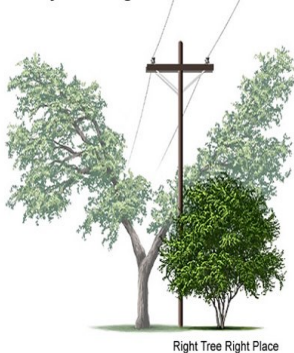
**All electrical work** performed in the City of Brainerd requires a "Request for Electrical Inspection" form to be filed, and work inspected by our inspector.

Please call **825-3210** or **829-2193** for more information.



## Tree Trimming ▶

### Utility Pruning



Tree trimming requests will be put on a list to be done during the winter months. Trees that interfere with Brainerd Public Utilities' (BPU) power lines, with the exception of service wires to residences or buildings, will be trimmed or removed depending on the circumstances.

Trimming or removal of trees on private property is the property owner's responsibility. BPU will temporarily remove and replace the property owner's service wires to accommodate the tree trimming or removal during normal business hours.

BPU requires 24 hours notification to temporarily remove the service wires.

## Fat-Free Sewers ▶

Fats, Oils, & Greases aren't just bad for your arteries and your waistline; they're bad for sewers, too. Sewer overflows and backups can cause health hazards, damage home interiors, and threaten the environment.

### Where does the grease come from?

Most of us know grease as the byproduct of cooking. Grease is found in such things as:

- ◇ Meat Fats, Food Scraps, Dairy Products
- ◇ Lard, Cooking Oil, Shortening, Sauces
- ◇ Butter and Margarine, Baking Goods



Too often, grease is washed into the plumbing system, usually through the kitchen sink. Grease sticks to the insides of sewer pipes (both on your property and in the streets). Over time, the grease can build up and block the entire pipe. Home garbage disposals do not keep grease out of the plumbing system. These units only shred solid material into smaller pieces and do not prevent grease from going down the drain.

### The results can be:

- ◇ Raw sewage overflowing in your home or your home;
- ◇ An expensive and unpleasant cleanup that often must be paid for by you, the homeowner;
- ◇ Raw sewage overflowing into parks, yards, and streets;
- ◇ Potential contact with disease-causing organisms;
- ◇ An increase in operation and maintenance costs for local sewer departments, which causes higher sewer bills for customers.

### What we can do to help:

The easiest way to solve the grease problem and help prevent overflows of raw sewage is to keep this material out of the sewer system in the first place.

There are several ways to do this.

- ◇ Never pour grease down sink drains or into toilets.
- ◇ Scrape grease and food scraps from trays, plates, pots, pans, utensils, and grills and cooking surfaces into a can or the trash for disposal (or recycling where available).
- ◇ Do not put grease down garbage disposals. Put baskets/strainers in sink drains to catch food scraps and other solids, and empty the drain baskets/strainers into the trash.

If you have any questions regarding this matter, please call BPU's Wastewater Treatment Plant at 825-3237 or 825-3240.

## How Much Does It Cost to Operate Your Electrical Appliances

\* Based on \$0.0688 per kilowatt - hour

Appliances	Average kWhs Monthly	Approximate Cost *
Freezer (Frost Free)	150	\$10.32
Freezer (Standard)	100	\$6.88
Microwave Oven (approx. 1200 watts per hour / 30 min per day)	19	\$1.31
Clothes Dryer	125	\$8.60
DVR (approx. 51 watts per hour / 24 hours a day)	40	\$2.75
Automatic Washer	15	\$1.03
Water Heater (Family of 4)	500	\$34.40
LCD/LED 22" TV (approx. 30 watts per hour / approx. 5 hours per day)	5	\$0.35
Blender	1	\$0.069
Coffee Maker	10	\$0.69
Dishwasher	100	\$6.88
Toaster	3	\$0.21
Garbage Disposal	2	\$0.13
Game Console (approx. 90 watts per hour / 3 hours per day)	10	\$0.69
Electric Blanket	15	\$1.03
Cell Phone (charging 3 hours per day x 2 phones)	2	\$0.14
Hair Dryer (1500 watts per hour / approx. 10 minutes a day)	10	\$0.69
Humidifier	30	\$2.06
Dehumidifier	200	\$13.76
Electric Range	150	\$10.32
Refrigerator (Frost Free)	200	\$13.76
Space Heater (approx. 1500 watts per hour/ 8 hours per day)	370	\$25.46

### Energy Use Calculator ►

Energy Use Calculator provides free energy usage calculators to find the electricity consumption of your devices. Go to <http://energyusecalculator.com/index.htm> to find out how much energy your devices are using and how much they are costing you.

### Fee For Frozen Water Lines (BPU Policy 2014-17) ►

**Brainerd Public Utilities (BPU) will charge residential/business customers a \$150 fee if BPU staff has been to the residence/business the first time to thaw frozen water lines, informed the BPU customer to run his/her water to avoid further freeze ups; the customer neglects to follow the instructions given by BPU staff; and BPU has to make a return trip to the residence/business to thaw water lines for the second time.**

**The \$150 charge will appear on the BPU customer's next month's utility bill.**